



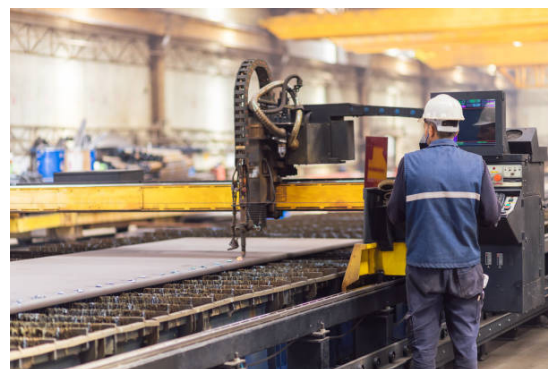

WORKFORCE DEVELOPMENT
ALLIANCE | St. Joseph

As employee recruitment, training and retention continue to challenge businesses in Northwest Missouri, **WorkForge** offers a proven and measurable solution. Our specialized employee skills development is designed to help with employee recruitment, orientation and retention. **WorkForge** can prepare individuals with the skills and abilities necessary for success with your business and develop your employees of today into organizational leaders of tomorrow.

As a Buchanan County employer, you may enroll your employees into the following skills development pathways...

Recommended and Available Tracks Include:

• Supervisor / Leadership Training	12 Courses
• Introduction to CNC	12 Courses
• Advanced CNC	12 Courses
• Pneumatics	10 Courses
• PLC	8 Courses
• Robotics	7 Courses
• Health & Safety	12 Courses
• Food safety courses	8 Courses
• Manufacturing Logistics	7 Courses
• Introduction to Welding	8 Courses
• Advanced Welding	8 Courses
• Fabrication, Composites & Materials 1	12 Courses
• Fabrication, Composites & Materials 2	12 Courses
• Electrical Troubleshooting 1	10 Courses
• Electrical Troubleshooting 2	10 Courses
• Six Sigma	12 Courses
• Blueprints & Engineering Courses	12 Courses
• Automation	8 Courses
• Basic Manufacturing Skills	12 Courses

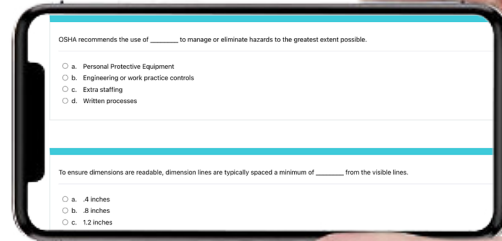
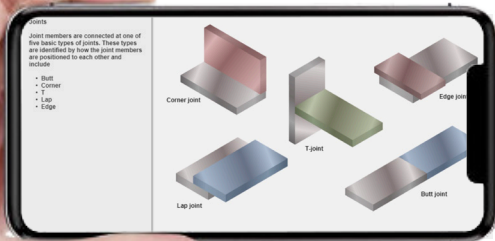
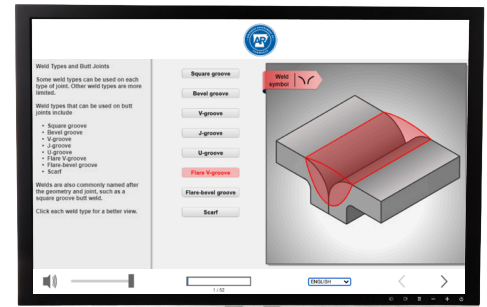
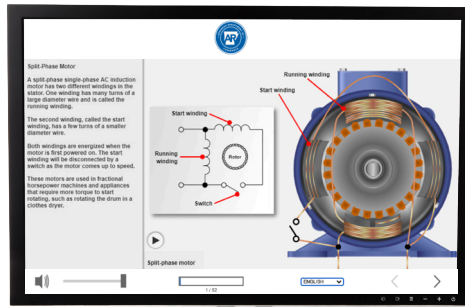


ATTRACT. DEVELOP. RETAIN.



The Delivery

Our web-based delivery platform makes it easy for anyone to log in and begin the training and associated quizzes on any computer or mobile device with an internet connection. The platform is both SOC2 and FEDRAMP compliant. Content is available in both English and Spanish, and courses are taken at a self-pace, without the pressures of a classroom setting. Additional languages available upon special request.



To learn more about how WorkForge and the St. Joseph Chamber of Commerce can help you attract and retain highly skilled employees, please contact:

Elishia Carrillo
elishia.carrillo@workforce.com
 Account Executive
 WorkForge

Kristie Arthur
arthur@saintjoseph.com
 Director of Workforce Development
 St. Joseph Chamber of Commerce

info@workforce.com • www.workforce.com

